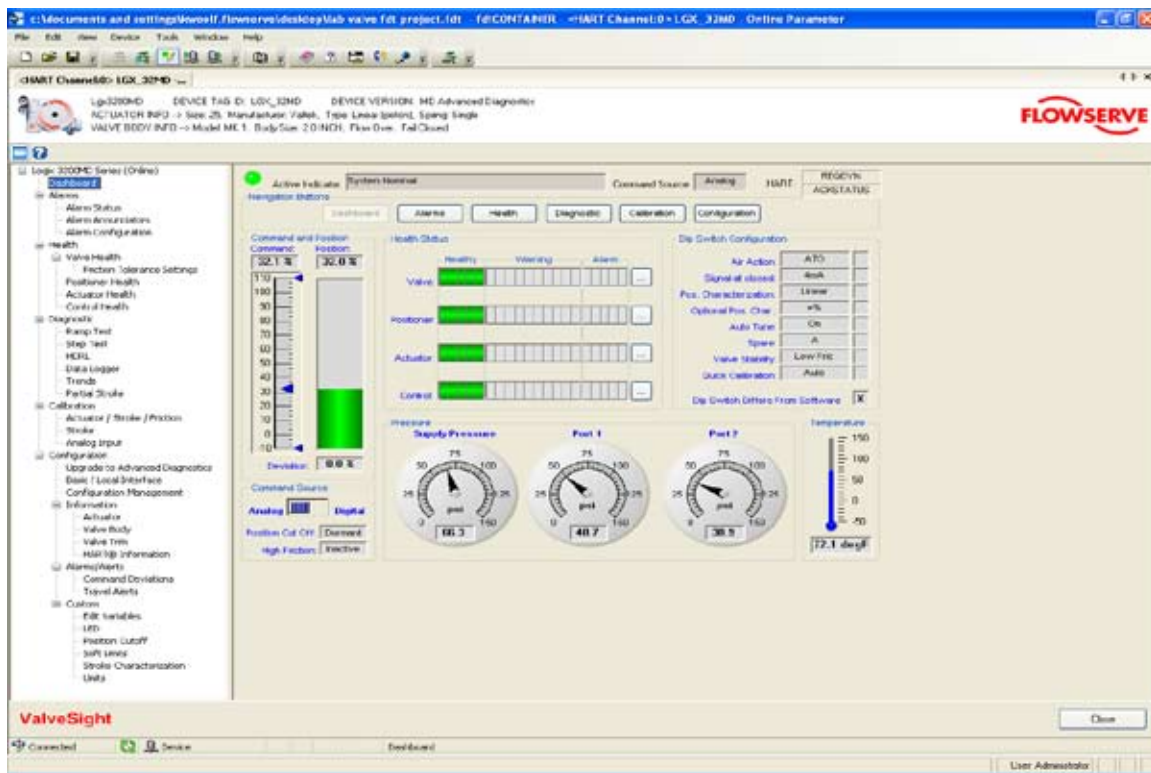




ValveSight Diagnostics Quick Start Guide for Logix MD Positioners with HART®



1 System Requirements

The ValveSight DTM has been successfully tested with the following system components

- **Computer Systems**

 - Windows XP, Service Pack 2
 - 512 M Ram

- **Power Supply**

 - Non-filtered, 4-20 mA

- **Modem**

 - IFAC HART Modem
 - Viator RS232 Serial HART Modem

- **Communication DTM**

 - CodeWrites
 - M&M - OEM HART Communication DTM 1.0.5
 - Yokogawa
 - ABB
 - MTL HART Multiplexer

- **Interoperability Tested Frames**

 - M&M FDT Container
 - Pactware (Point to Point)
 - ABB Freelance
 - ABB Composer
 - Yokogawa Fieldmate
 - Schneider

- **Frames Being Tested**

 - Yokogawa PRM 3.02 (Installation & Communication successfully tested)
 - Honeywell FDM C200
 - Honeywell FDM C300
 - Invensys Foxboro
 - ABB 800 XA

The DD has been successfully tested on the following field components:

 - HART Tokenizer Version 6
 - DD Host: SDC-625 and HandHeld

NOTE: Use of the DTM or DD on system components other than those listed above is at the users own risk.

- **Certifications**

The FDT Group certified the ValveSight DTM version 0.1.0.0 on July 4th 2008.

- **Regulators**

Use a regulator on all Logix MD devices with pressure sensors. Fluctuations in supply pressure can trigger alarms. Keeping the pressure steady will help reduce alarms and provide for more accurate diagnostics.

2 General Information

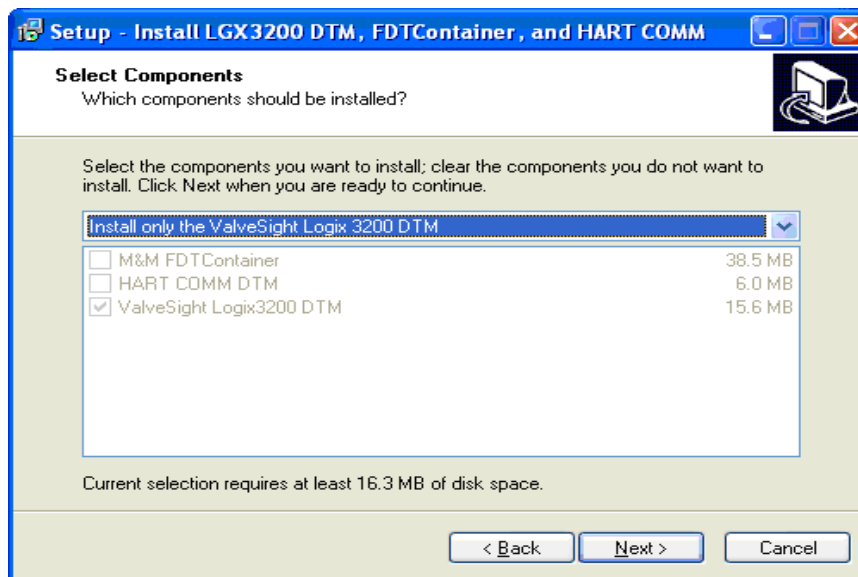
The following information is designed to assist in the installation and use of the ValveSight diagnostic solution. ValveSight diagnostics are compatible with the Flowserve Logix family of positioners. Modifying this product or using procedures other than those outlined in this document could drastically affect performance and be hazardous to personnel and equipment, and may void existing warranties.

3 Installation and Setup Instructions

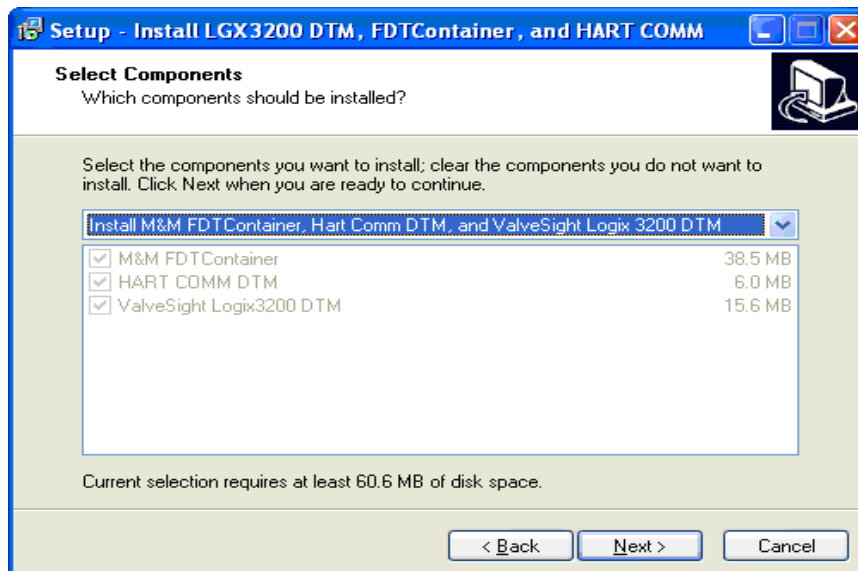
3.1 Installing the Frame, COMM DTM, and ValveSight DTM

Please go to the Flowserve Customer FTP site (<ftp://fcdftp.flowserve.com/> Username: cust_fcd Password: flow2fcd) and open the folder ftpDTM Installs and select the Logix device you want to download the software for. This install will allow you to install the ValveSight DTM for your device (Logix 500, 3200, or 3400). If you do not have a FRAME and Communication DTM there is an install available to download all three components (FRAME, Communication DTM, Valve Sight DTM).

- To install only the ValveSight DTM, select the following option:



- To install the Frame, Communication DTM, and the ValveSight DTM please select the following option:



Selecting to install the Frame, Communication DTM, and ValveSight DTM will into 3 installation wizards.

- The following wizard will install the FRAME. Please follow the instructions in the wizard.



- The following wizard will install the OEM HART Communication DTM. Please follow the instructions in the wizard.



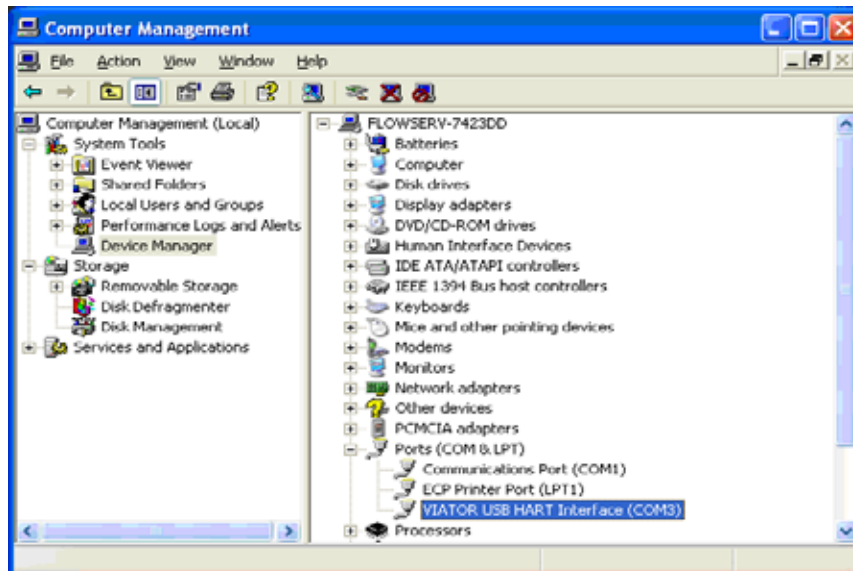
- The following wizard will install the ValveSight DTM for the Logix positioner. Please follow the instructions in the wizard.



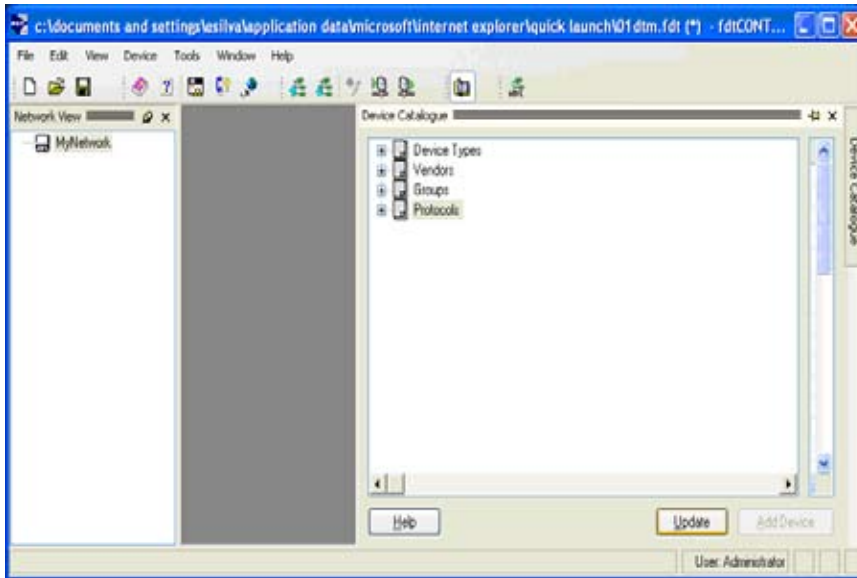
3.2 Configuring the HART® Modem and Communication DTM

If the modem is a serial port, move onto the next step. The USB modem requires you to install a driver. Note which USB slot you use. If you use it in a different slot later you must reinstall the driver for the new USB slot.

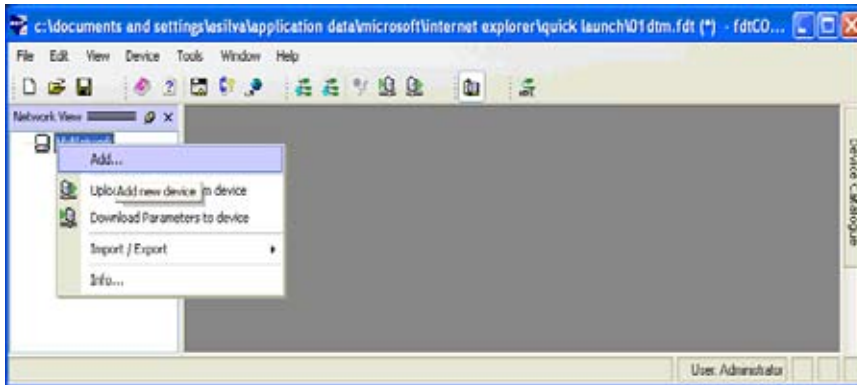
- Right click on *My Computer* and select *Manage*
- Click on *Device Manager* and select *Ports*
- Note in which port the modem was installed and open it



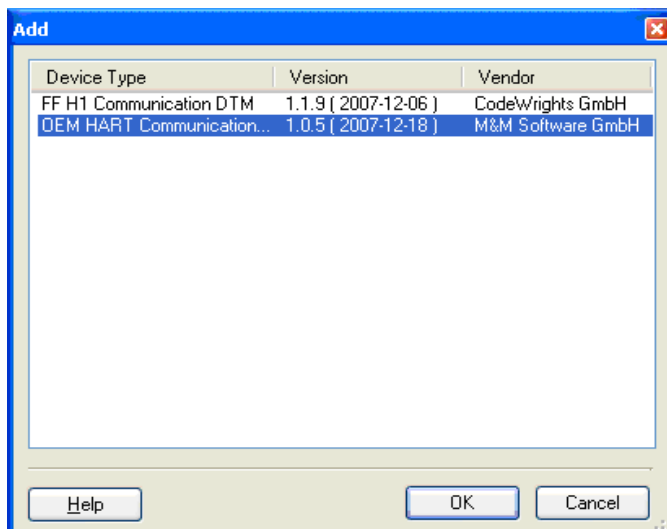
- Double click on the FDT Container, which is the M&M Frame to open it. You will see a widow on the right of the screen called “Device Catalog”. At the bottom of the screen click on *Update*. This should allow the Frame to identify both the COMM DTM and the Valve-Sight DTM.



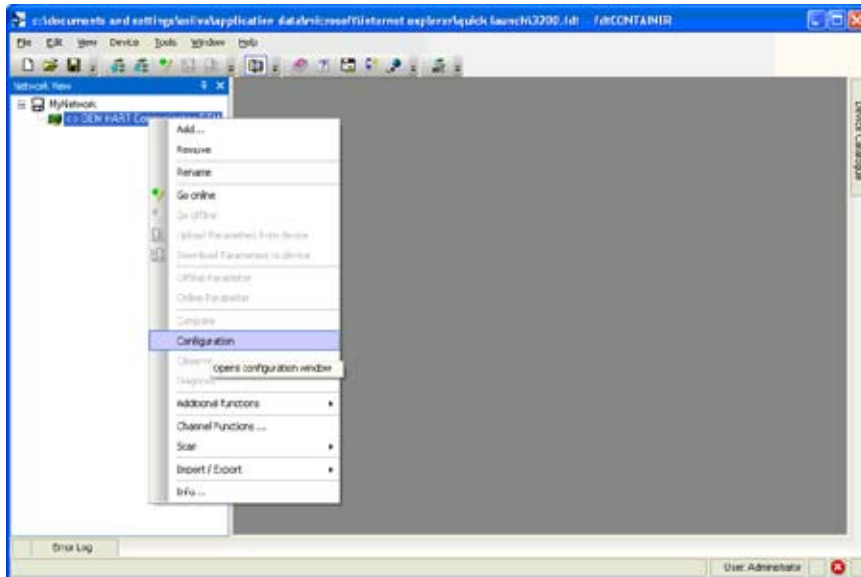
- On the left side of the screen you will see a window “Network View”. Right click on the *My Network* icon. Select *Add*.



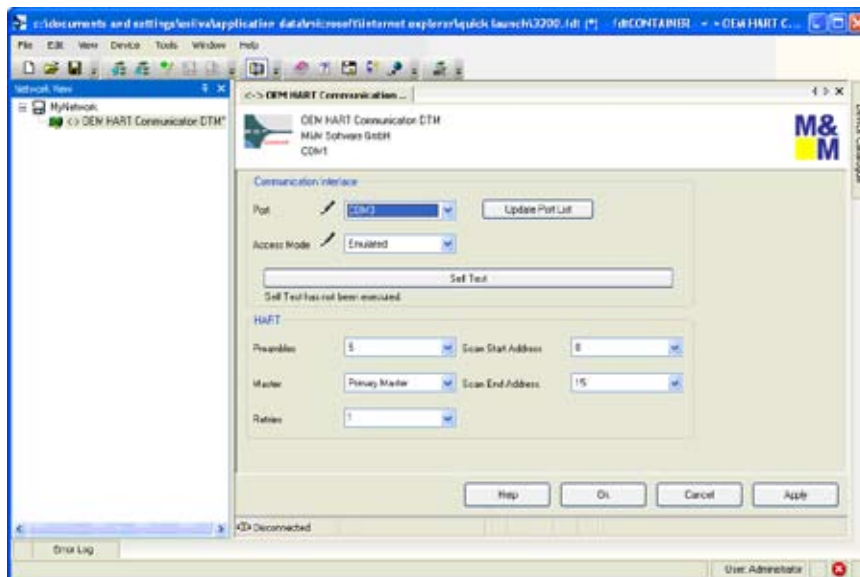
- Select *OEM HART Communication DTM*. You will now see the OEMHART Communication DTM in the “Network View” window.



To configure the communication port right click the *OEM HART Communication DTM* in the “Network Views” window. Select *Configuration*.

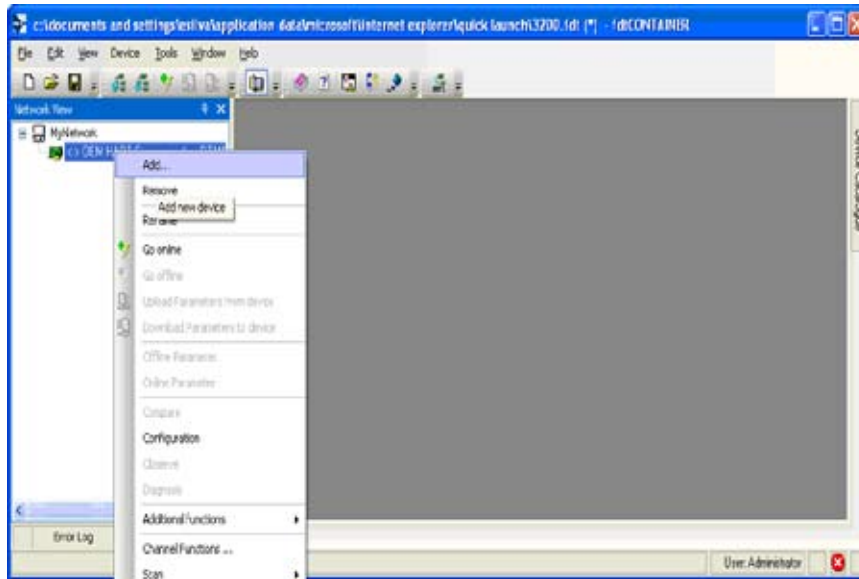


- Select the correct port where the modem is installed.
- Check with the modem manufacturer to select the correct “Access Mode”.
- Under the “Communications Mode”, set the correct “Access Mode”
- Click the *Apply* or *Okay* button to apply modem configuration changes.

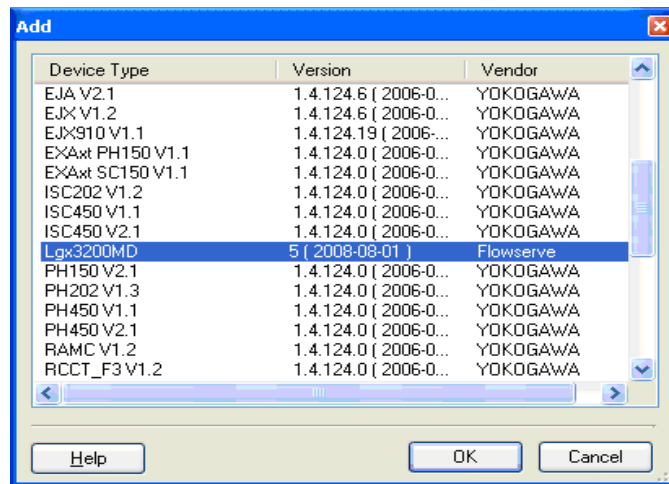


3.3 Configuring the ValveSight DTM for Logix Devices

- To add the ValveSight Logix DTM right click on the *OEM HART Communication DTM* in the “Network Views “ window and select *Add*.



- Select the Logix model of your device.

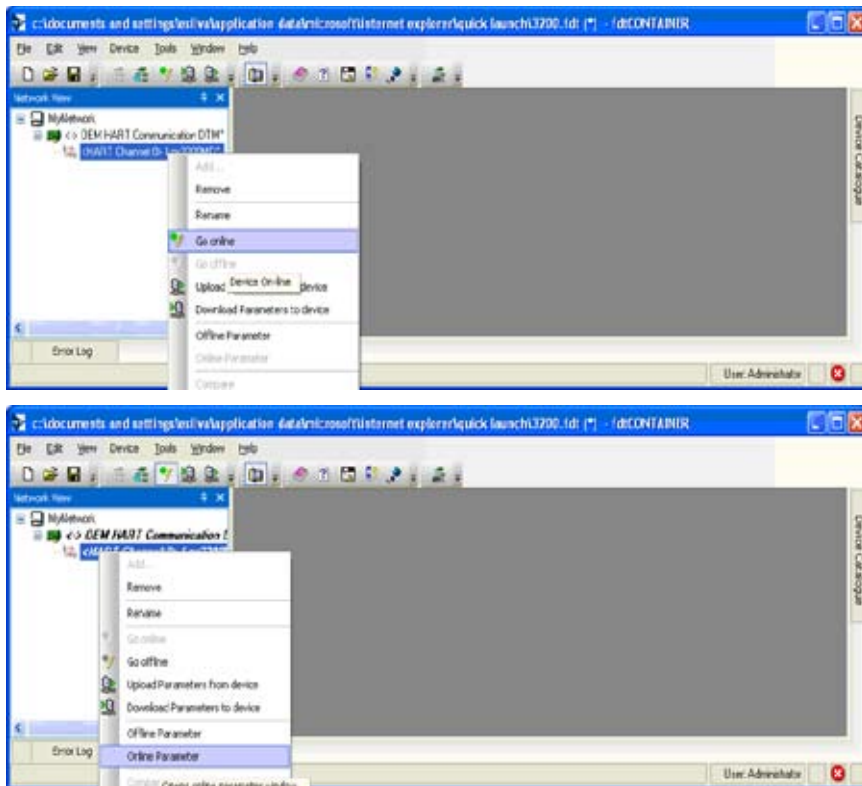


Optional: Save the project to your desktop or somewhere easy to remember. This will save you time so you do not have to create a field network in the future.

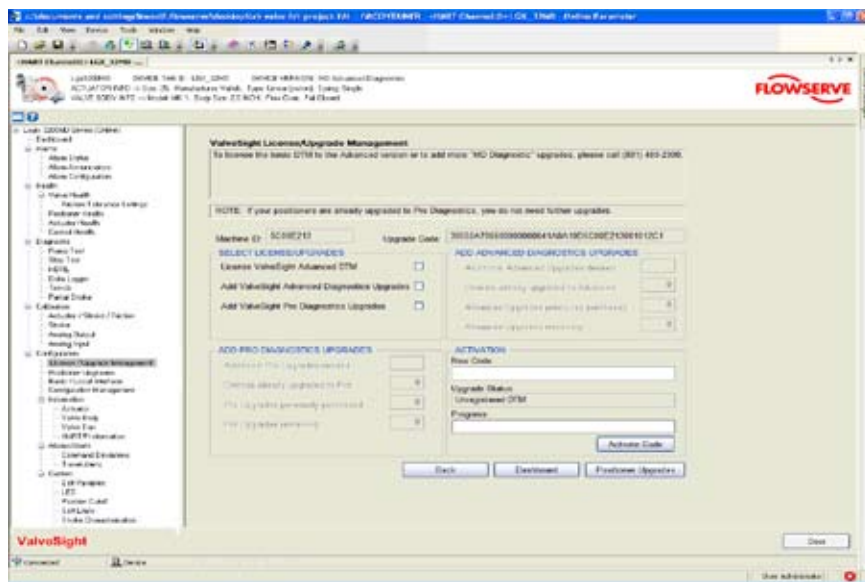


3.4 Launching the ValveSight DTM

- To launch the ValveSight DTM, ensure the modem is connected to a device, and right click on the *HART Channel 0> Logix* and select *Go Online*.
- Double click the "HART Channel 0> Logix", or right click and select *Online Parameter*.



3.5 Licensing the DTM



To take advantage of ValveSight’s full diagnostic capabilities, an Advanced license for the ValveSight DTM and upgrades for the Logix 3000MD series devices may be purchased using the Configuration > License/Upgrade Management screen. Complete the information requested on the screen, then contact Flowserve as indicated. You will need the information on this screen in order to process your request. Flowserve will provide a new license code to you. The screen must be filled out accurately and the new code entered in order for the new code to activate. After activating the new code, the Advanced DTM license will be active, the DTM menus will expand, and positioner upgrades will be available for use.

Note: All purchases activated on a PC apply to that PC only. Device upgrades must be made from the PC that was used to purchase them. The Advanced DTM license will apply to the PC that was used to purchase it.



www.flowserve.com or call 800 1 800 220 0000

Flowserve Corporation has established industry leadership in the design and manufacture of its products. When properly selected, this Flowserve product is designed to perform its intended function safely during its useful life. However, the purchaser or user of Flowserve products should be aware that Flowserve products might be used in numerous applications under a wide variety of industrial service conditions. Although Flowserve can (and often does) provide general guidelines, it cannot provide specific data and warnings for all possible applications. The purchaser/user must therefore assume the ultimate responsibility for the proper sizing and selection, installation, operation and maintenance of Flowserve products. The purchaser/user should read and understand the Installation Operation Maintenance (IOM) instructions included with the product, and train its employees and contractors in the safe use of Flowserve products in connection with the specific application.

While the information and specifications contained in this literature are believed to be accurate, they are supplied for informative purposes only and should not be considered certified or as a guarantee of satisfactory results by reliance thereon. Nothing contained herein is to be construed as a warranty or guarantee, express or implied, regarding any matter with respect to this product. Because Flowserve is continually improving and upgrading its product design, the specifications, dimensions and information contained herein are subject to change without notice. Should any question arise concerning these provisions, the purchaser/user should contact Flowserve Corporation at any one of its worldwide operations or offices.

© 2008 Flowserve Corporation, Irving, Texas, USA. Flowserve is a registered trademark of Flowserve Corporation.

Flowserve Headquarters

5215 N. O'Connor Blvd., Suite 2300
Irving, TX 75039
Telephone: 972 443 6500

Control Valve Manufacturing

1350 Mountain Springs Parkway
Springville, UT 84663-3004 USA
Telephone: 1 801 489 8611
Fax: 1 801 489 3719

Singapore

12 Tuas Ave. 20, 638824
Republic of Singapore
Telephone: +65 862 3332
Fax: +65 862 4940

Austria

Kasernengasse 6
Villach Austria 9500
Telephone: +43 0 4242 41181 0
Fax: +43 0 4242 41181 50

Australia

14 Dalmore Dr.
Scoresby, Victoria, Australia 3179
Telephone: +61 3 9759 3300
Fax: +61 3 9759 3301

China

585, Hanwei Plaza
7 Guanghua Road
Beijing, China 100004
Telephone: +86 10 6561 1900

***The ValveSight system can
be used on any control valve.***